

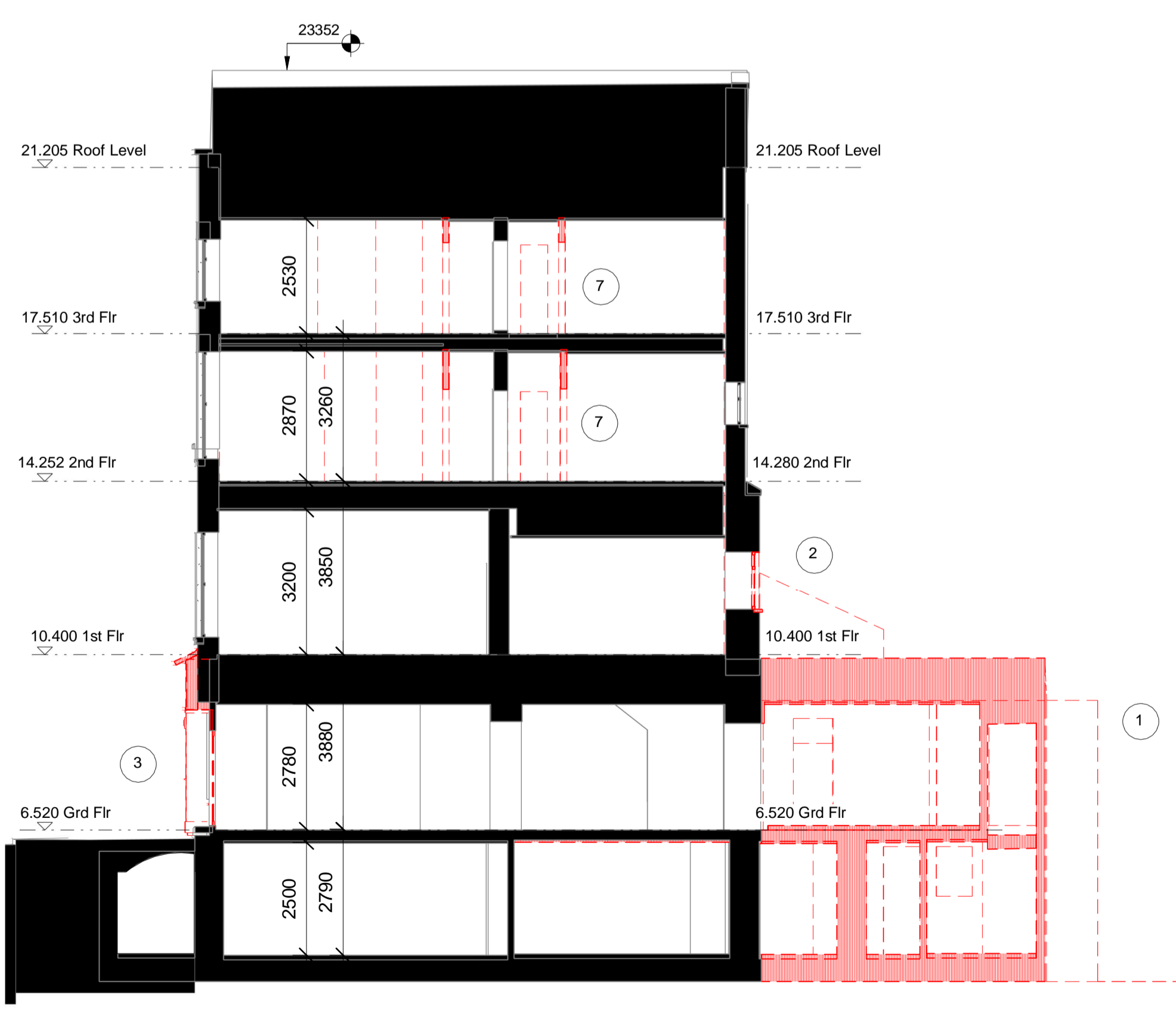
- Demolition Key - Elevations:
- 1 Existing rear extensions to be removed
 - 2 Window / door to be carefully removed to retain brickwork surround features. Replace with new if applicable - refer to Elevation drawings for details.
 - 3 Hoarding and any remaining elements to shop fronts to be removed. Brickwork to be made good to suit new shop front.
 - 4 Retain existing historic shopfront and repair in accordance with Conservation Officer's recommendations.
 - 5 Refer to site drawings for details of demolition works.
 - 6 Timber boarding to windows to be carefully removed.
 - 7 Internal walls and doors demolished

Key

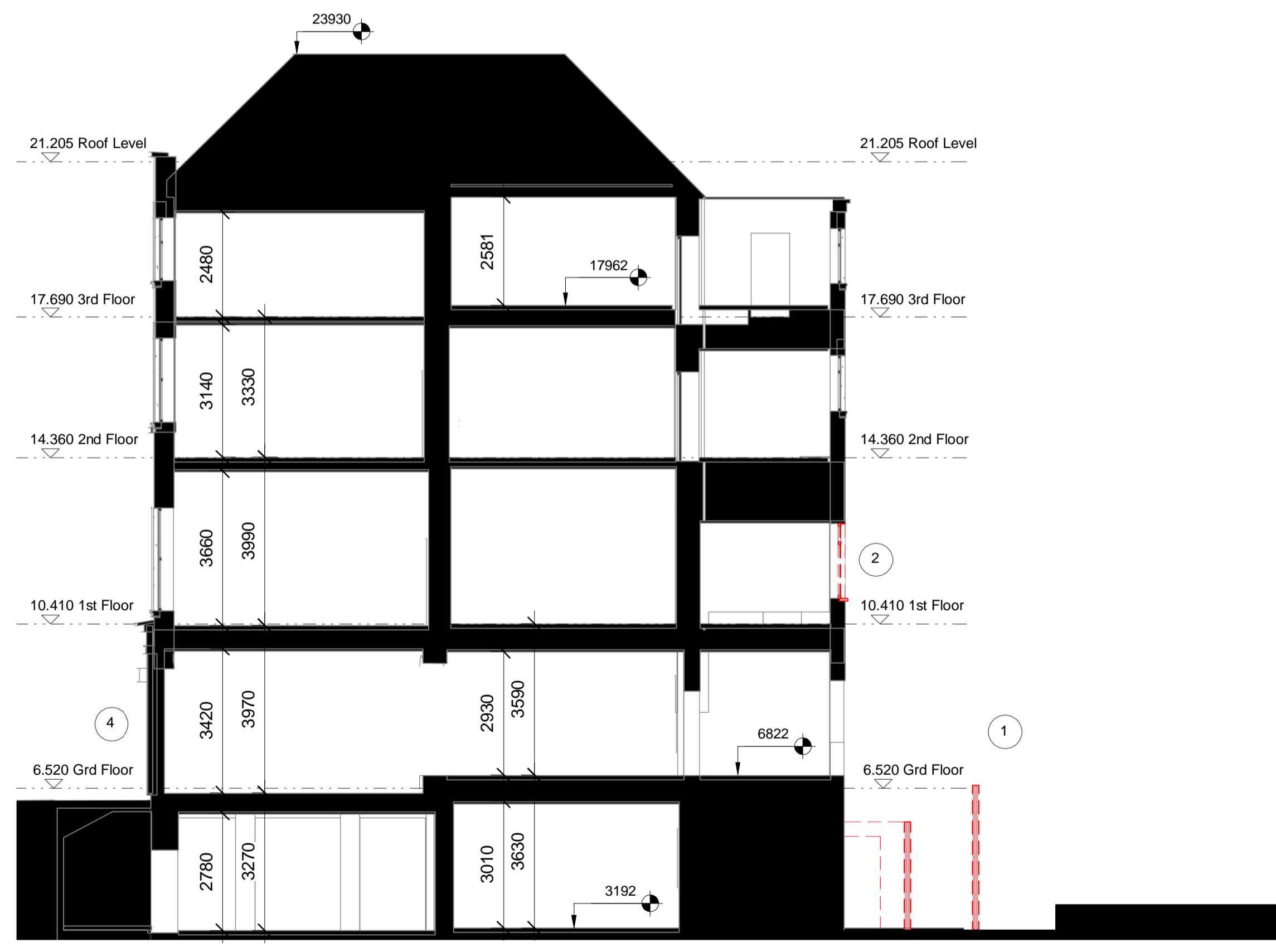
Existing Construction

Demolished

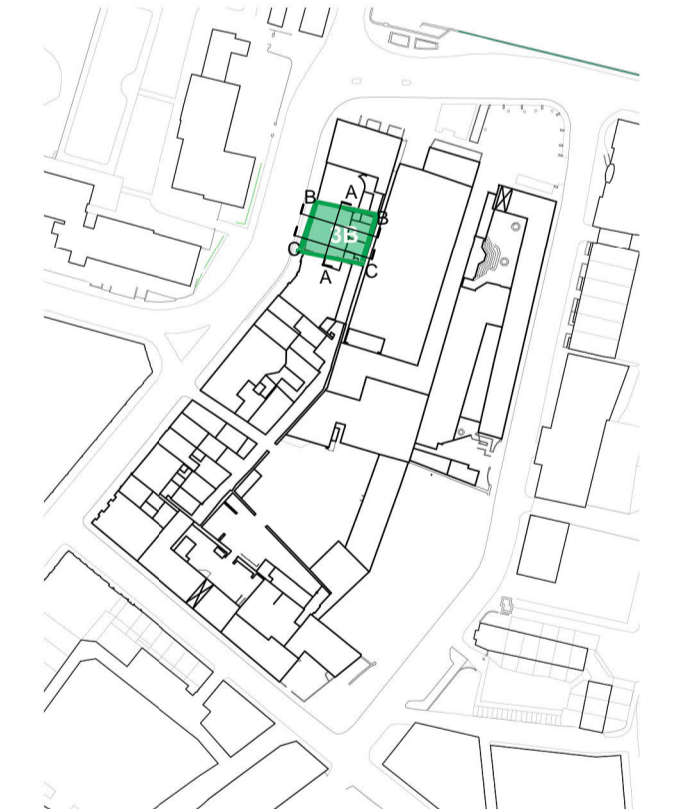
A-A Longitudinal Section through Nos 4 + 5 - Existing
SCALE: 1 : 100



B-B No 4 Rutland - Existing
SCALE: 1 : 100



C-C No.5 Rutland - Existing
SCALE: 1 : 100



ISSUE/REVISION HISTORY

I/R	DATE	DESCRIPTION
-	Jan 19	Planning Submission

PROJECT NUMBER
60568520

SHEET TITLE
Parcel 3B - Existing Sections

This drawing has been prepared for the use of AECOM's client. It may not be used, modified, reproduced or relied upon by third parties, except as agreed by AECOM or as required by law. AECOM accepts no responsibility, and denies any liability, whatsoever, to any party that uses or relies on this drawing without AECOM's express written consent. Do not scale this document. All measurements must be obtained from the stated dimensions.